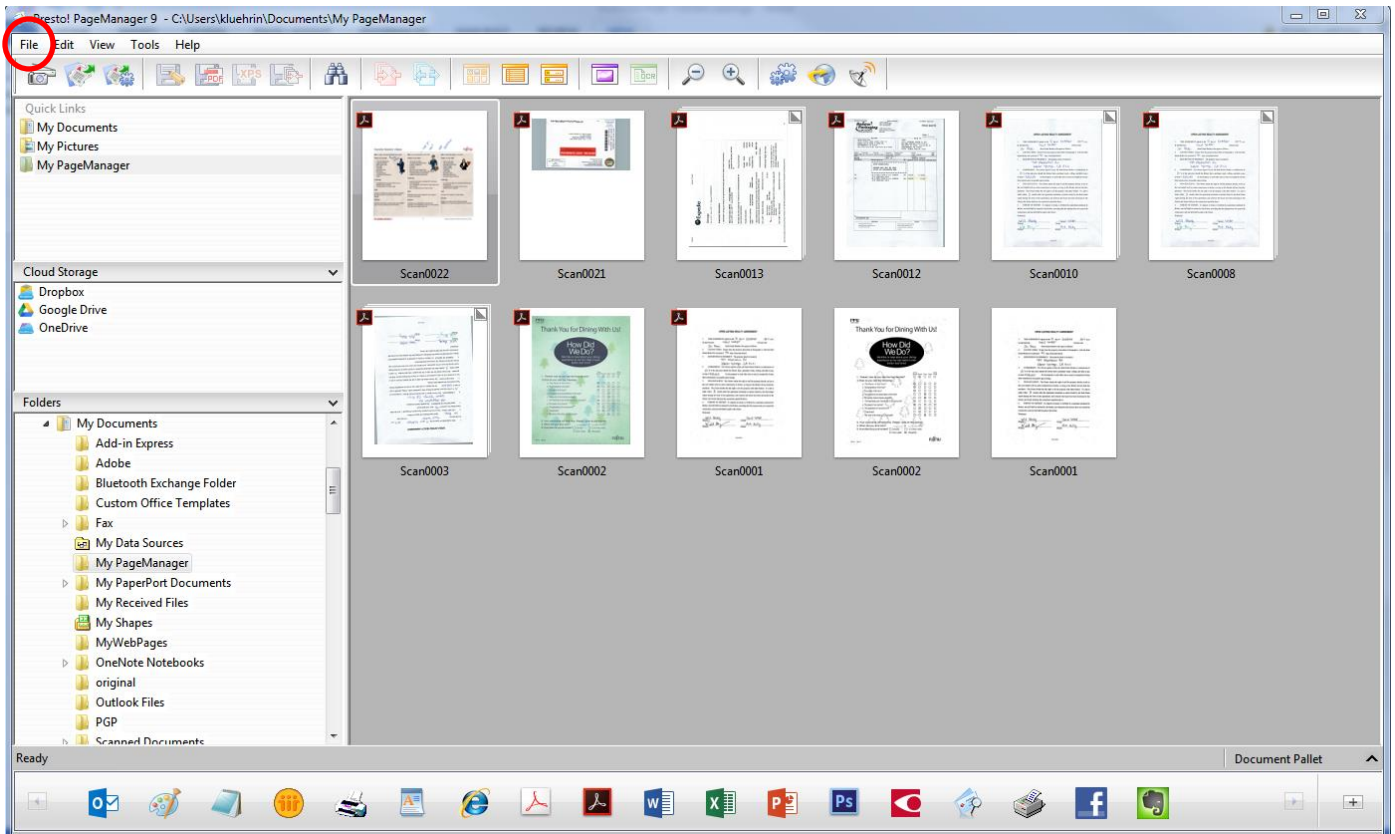


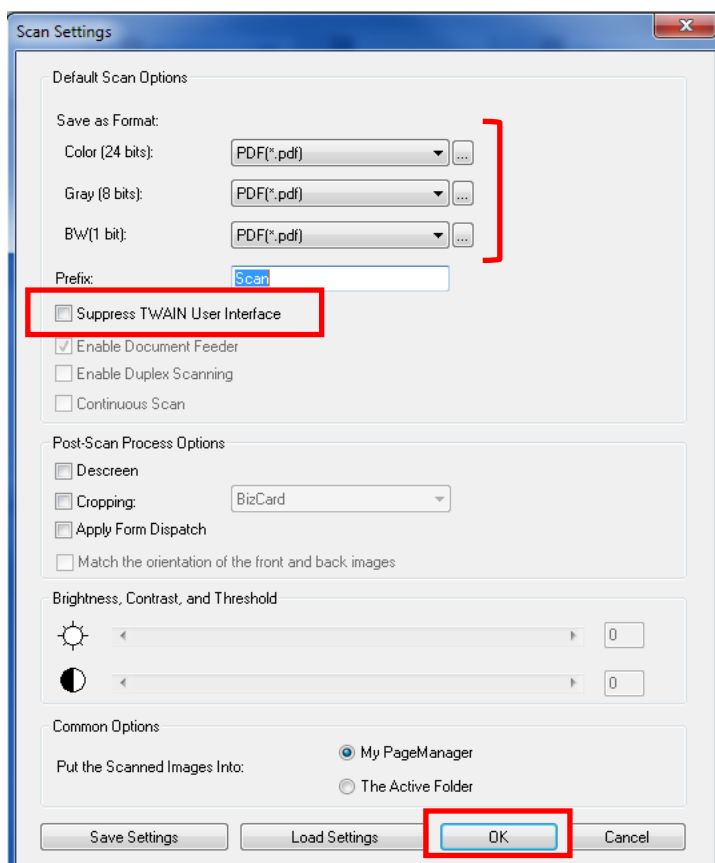
With ScanZen Eko scanners, you can use any software application to manage your documents through the TWAIN driver. If you choose to use the ScanZen out-of-the box software, we recommend using Presto! PageManager as it has most of the functions you'll need to create clean, organized images and convert to PDF.

To get the best quality scanned images at the most efficient speed, here's how we recommend you set your profiles.

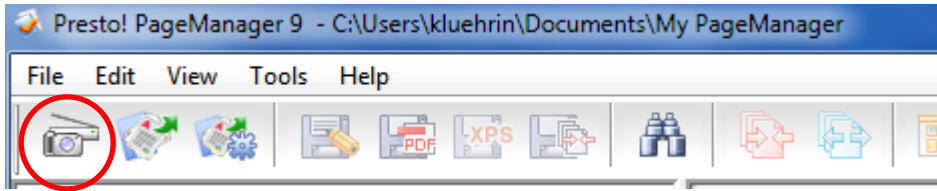
- 1) Open your scanner application (Presto! PageManager in this example). Select the "File" drop down menu, then "Scan Setting"



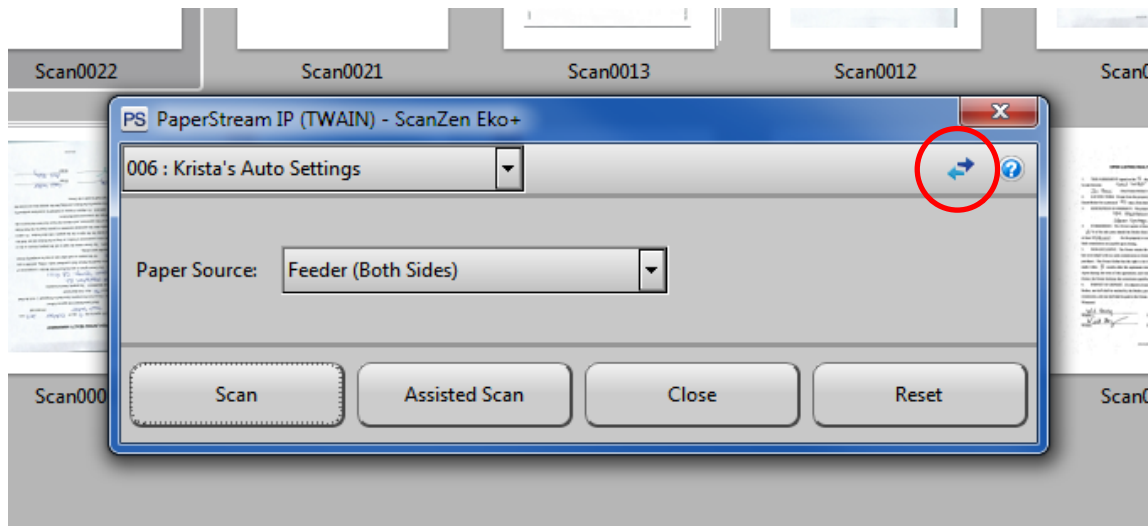
- 2) Select "PDF" for all formats
- 3) In order to utilize PaperStream IP TWAIN, you will need to deselect "Suppress TWAIN User Interface" and click "Ok".



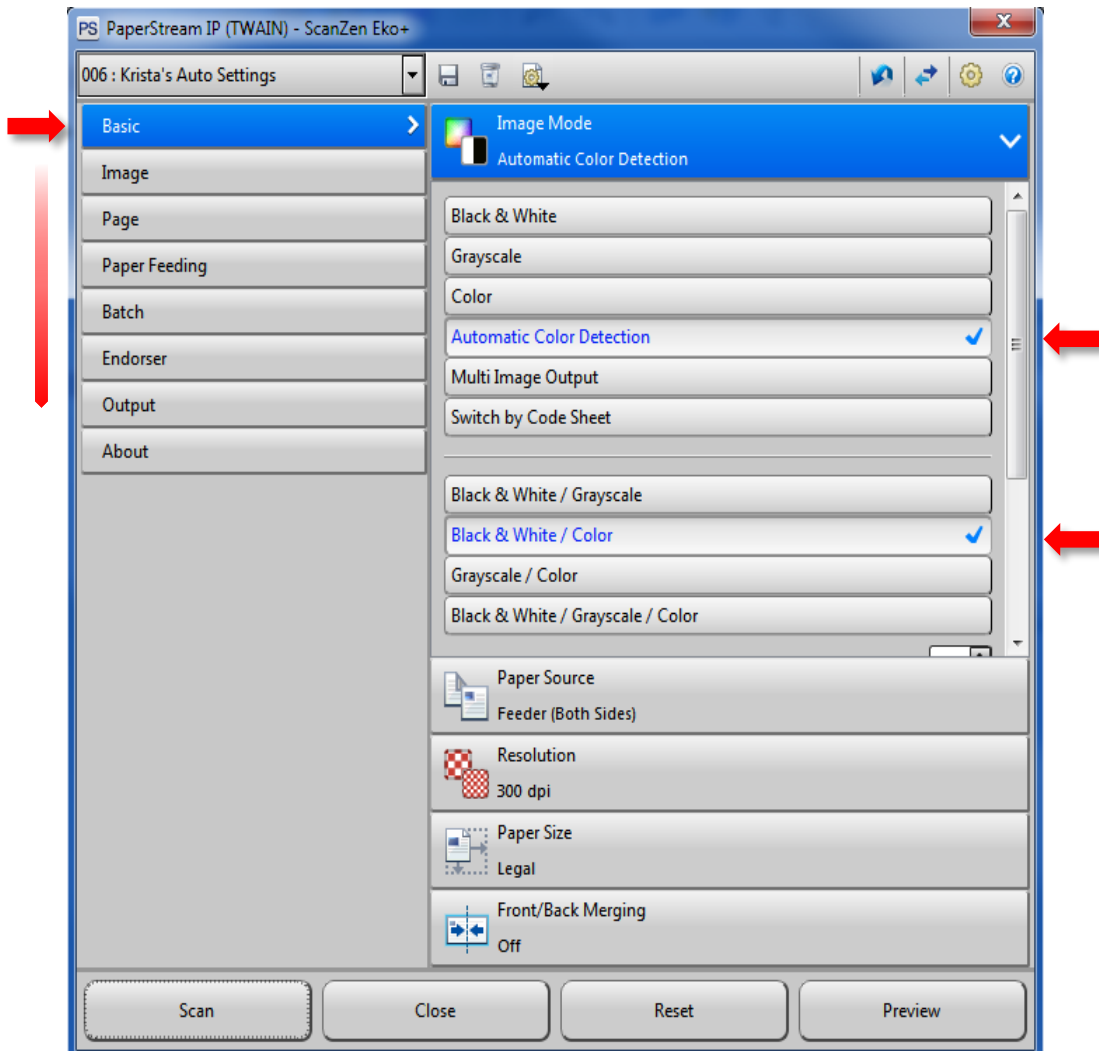
4) On the main menu top toolbar select the "Scan" icon



5) Click on the Double Arrow icon

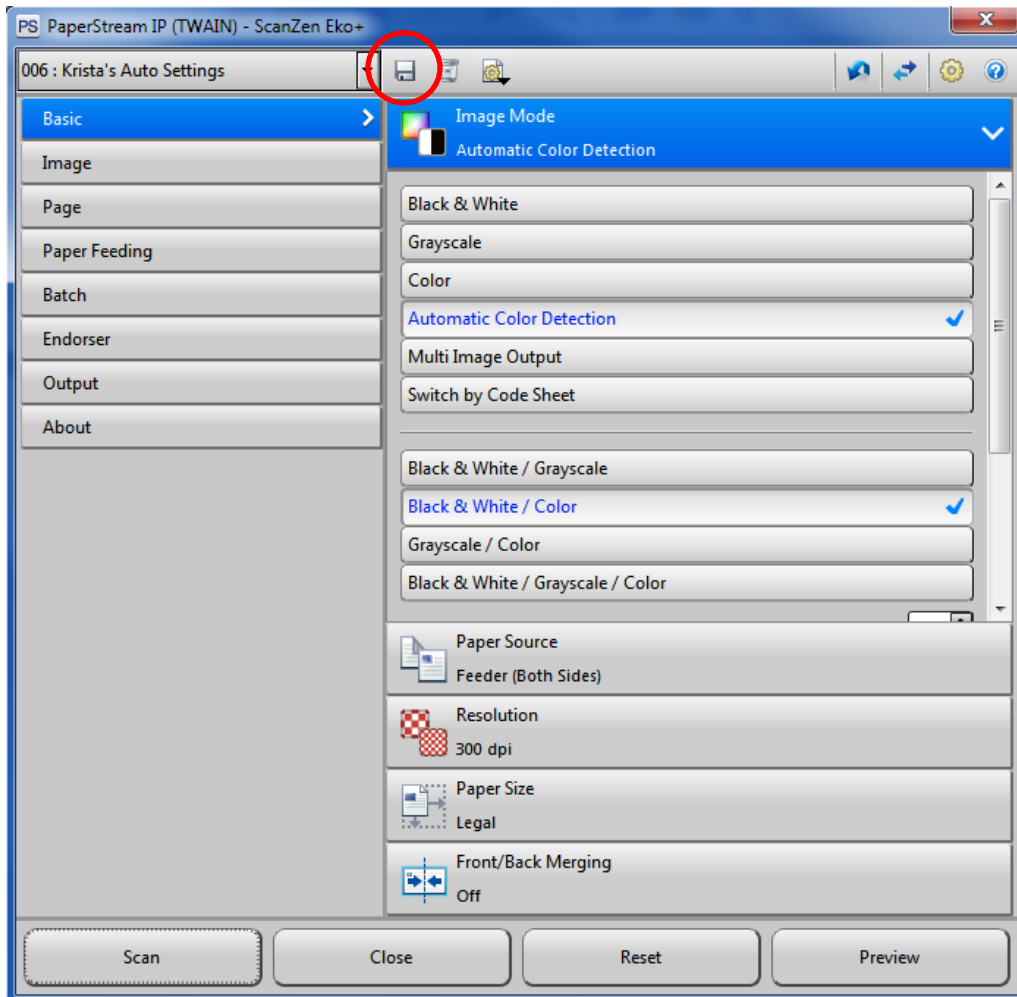


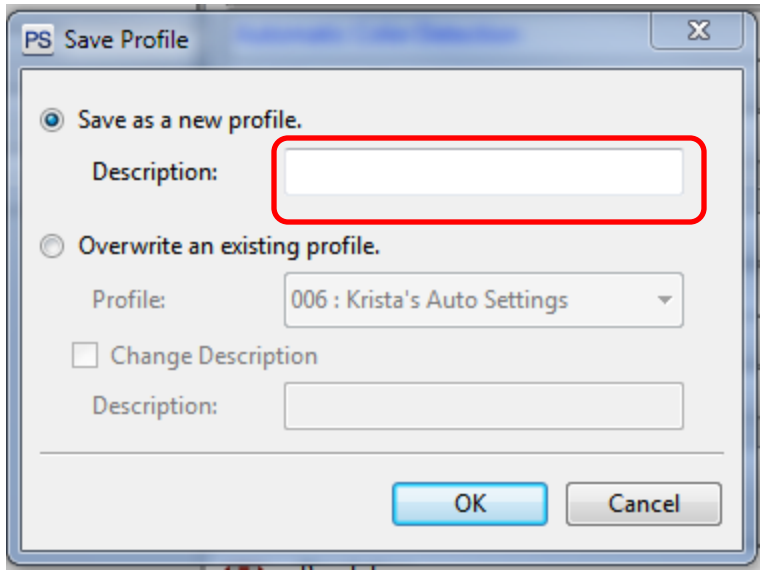
6) From this menu, click on each button on the left menu and select the following (follow the settings on the next page):



Left Side Button	Select Settings
Basic	Image Mode: Automatic Color Detection and Black & White / Color Paper Source: Feeder (Both Sides) Resolution: 300 dpi Paper Size: Legal Front/Back Merging: Off
Image	Black & White Method: Dynamic Threshold Tone Adjustment: Disabled Cleanup: On and Background Removal to "1" (middle of the adjustment bar) White Level Follower: Off Vertical Streaks: Off Drop Out Color: None Inverted Image: Off
Page	Cropping: Auto Size Split Image: Off Rotation: Auto Edge Correction: On Blank Page Detection: On
Paper Feeding	Multifeed Detection: Do Not Detect
Batch	Assisted Scan: Off Continuous Scan: Off Job Control: Off Patch Code Detection: Off Barcode Detection: Off
Endorser	Off
Output	JPEG Compression: "4" (middle of the adjustment bar)

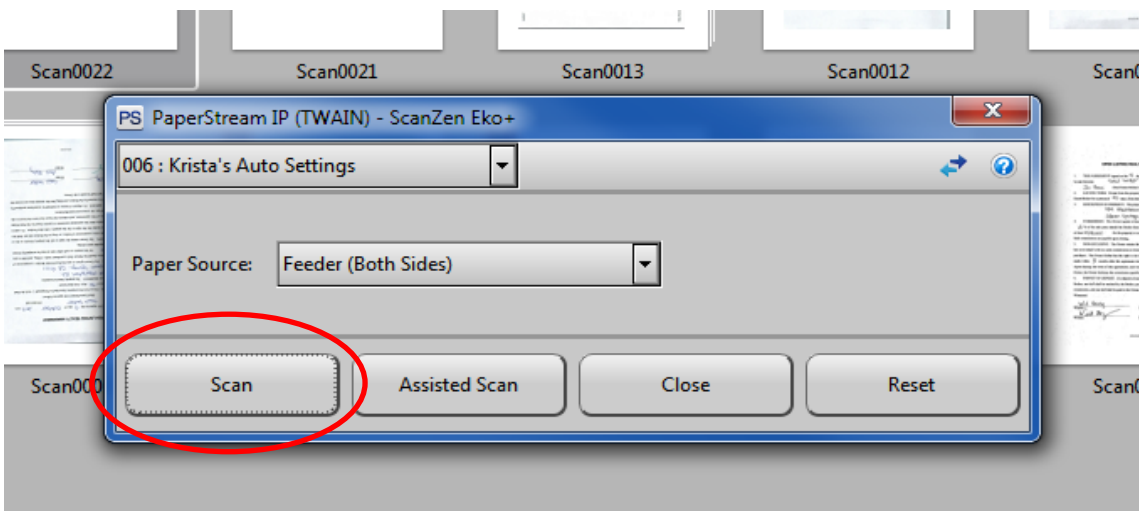
7) Select the "Save" button and a window will pop up. Name your profile and click "OK"





← Name your profile here

8) Once your profile is named and saved, you are ready to scan!



If you need any assistance setting profiles, please contact our customer support at:

844-686-8448 option 1, M-F, 5am – 5pm PT

teamjoisupport@scanzen.com

www.ScanZen.com/contactus

